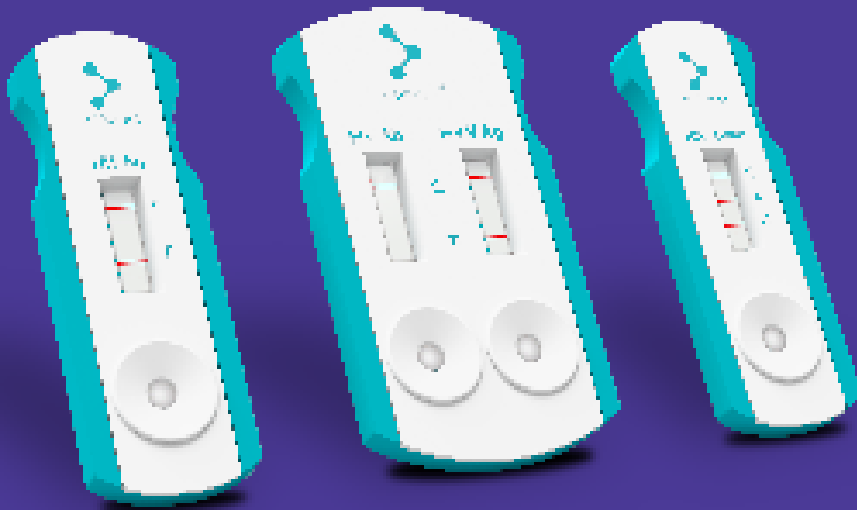


Antech

Smarter Diagnostics. Better Care.™

trūRapid

Test the Difference







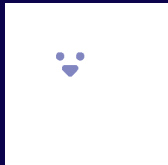

LEARN MORE

antechdiagnostics.de/produkte/inhouse-diagnostik

TEL: +49 (0) 6204 7890 221

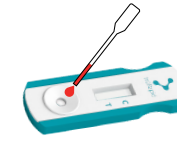
A Wide Range of Tests for all Diseases

Discover the new frontier of screening in Veterinary Medicine: a series of innovative tests for fast and accurate diagnosis.

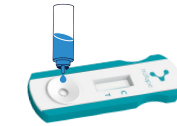
SPECIES	SAMPLE	TEST	ANTIGEN/ANTIBODY	DISEASE
		trūRapid FOUR	Ag Ab Ab Ab	Dirofilariasis Lyme borreliosis Ehrlichiosis Anaplasmosis
		trūRapid Ehrlichia	Ab	Ehrlichiosis
		trūRapid Heartworm Dirofilaria	Ag	Heartworm
		trūRapid Leishmania	Ab	Leishmaniasis
		trūRapid FIV/FeLV	Ab Ag	Feline Immunodeficiency Virus Feline Leukemia Virus
		trūRapid Parvovirus Giardia Coronavirus*	Ag Ag Ag	CPV/Parvovirus Giardiasis CCV/Coronavirosis
		trūRapid Parvovirus Giardia	Ag Ag	CPV/Parvovirus Giardiasis
		trūRapid Parvovirus	Ag	CPV/Parvovirus
		trūRapid Giardia	Ag	Giardiasis

* Coronavirus test is only available for dogs

Whole Blood / Serum / Plasma



Using the provided pipette, vertically dispense **1 drop** of sample into the sample well without touching the pipette to the test device. Allow the sample to absorb.

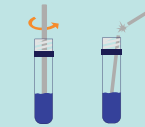


Add **2 drops** of buffer vertically to the sample well. Interpret the results after 10 minutes.

Feces



Unscrew the cap from the sample extraction buffer. Using the provided swab, coat the swab with a thin layer of fecal material. Try to saturate the swab with liquid, if any.



Immerse the sample swab into the sample extraction buffer and swirl the swab in the buffer. Break the swab shaft on the mouth of the bottle keeping the cotton swab in the bottle.



Replace the bottle cap. Snap off the tip. Apply **3 drops** into each sample well of the device and wait 10 minutes.

Results Interpretation



The test is **positive** if two lines are present (a control line C and a test line T).

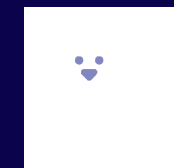


The test is **negative** if only one control line C is present.



The test is **invalid** if no line appears at the control line C even if a line is present at the test line T.

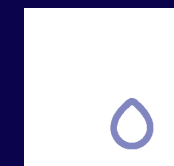
Discover the Benefits, Feel the Difference



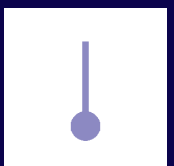
TWO SPECIES



SHORT TEST TIME



SMALL SAMPLE VOLUME



EASY STORAGE

A Valuable Help in your Daily Routine

trūRapid Reader is a **rapid test reader**, which is based on the scanning of immunochromatographic tests from the trūRapid series, allowing results to be digitalized.

It offers **full traceability of results**, that can be exported simply by an USB stick or printed.

Its **high sensitivity** allows avoiding false negatives and **obtaining reliable and reproducible results**.

Furthermore, **the reading is performed automatically**, supporting the Veterinary in his daily routine. Thanks to its **ease to use and small size**, it fits perfectly in any laboratory.

Discover the trūRapid Reader's efficiency and convenience: get accurate results within minutes!

 **Test allowed:** single and multiple trūRapid series tests

 **Species:** dog, cat

 **Test time:** 10 minutes

 **Database:** 200 tests

 **Connectivity:** Wi-Fi, Ethernet and LAN

 **Inactivity shutdown Timeout:** 30 minutes



Enjoy its Extraordinary Benefits...



Easy to Use

Touch screen and intuitive interface, allowing easy entry of patient data and quick start of test reading.



Efficient & Reliable

The device incubates and interprets the results of different tests' type included in the trūRapid portfolio and offers a standardized reading, eliminating operator-related differences.



Flexible & Wireless

Thanks to its adapter, it can read both single and multiple trūRapid tests. It can also be used wireless, thanks to the integrated battery with 4 hours of autonomy.



Accurate & Energy-Saving

The result is read at the exact time of each test and stored in the large data-base. Automatic switch-off function when not in use.

trūRapid Anaplasma

Only available in the trūRapid FOUR



trūRapid Anaplasma is a rapid test for detection of **Anaplasma phagocytophilum and platys antibodies** in canine serum, plasma, or anticoagulated whole blood.

Anaplasmosis is a bacterial disease that, in a dogs, comes in two forms. Anaplasma phagocytophilum infects neutrophils (this is the form that is also found in people). The second type of Anaplasma organism, Anaplasma platys, infects a dog's platelets.

Anaplasmosis occurs worldwide in a wide number of mammals including dogs, cats, and people. Rodents are thought to be the reservoir for Anaplasma phagocytophilum while dogs are theorized to be the reservoir for Anaplasma platys.

In both cases, while mammals are the reservoir, ticks are the means of transmission. Symptoms usually begin within one to two weeks of the initial tick bite and transmission.

The symptoms vary depending on which organism has infected the dog. Anaplasma phagocytophilum is the most common form of anaplasmosis. Reported signs include lameness and joint pain, lethargy, inappetence, fever. Anaplasma platys infects the platelets, therefore, signs of this form of anaplasmosis are related to the body's inability to properly stop bleeding and include bruising and petechia as well as nosebleeds.

-  Test for dogs
-  Whole Blood Serum Plasma
-  Ab
-  Anaplasmosis
-  10 minutes test time
-  storage temperature + 15 °C + 30 °C

Test performance

INFECTIOUS AGENT (annual screening recommended)	Sensitivity	Specificity	Reference	When to test
Anaplasma	97,4%	99,5 %	commercial rapid test	3-6 weeks after exposure In case of symptoms with negative test → PCR

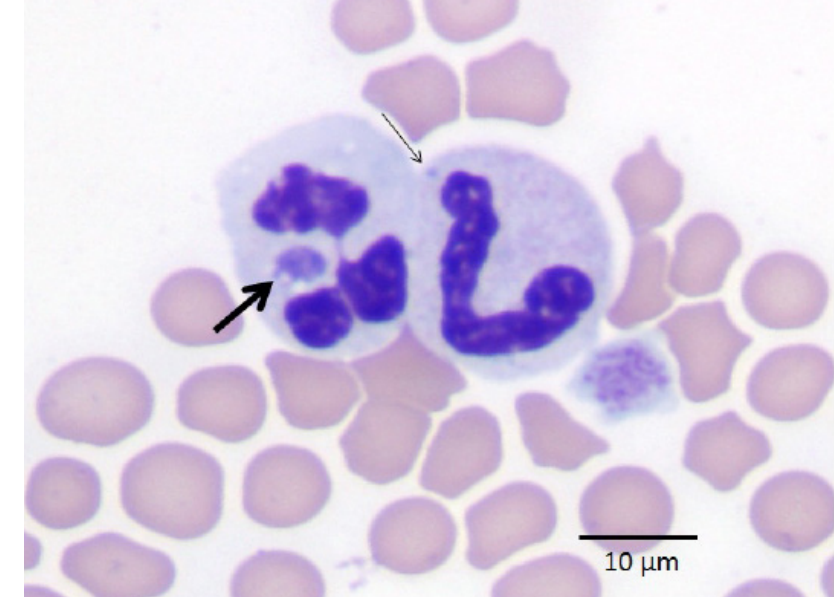
*IDEXX

Test identity card

Name: trūRapid FOUR
Sample Type: Whole Blood/Serum/Plasma
Shelf Life: 18 Months
Test Time: 10 Minutes
Species: Dog
Storage: Room Temperature

VALIDATION

Abstract: Diagnosis of Anaplasmosis disease in dogs



The trūRapid Anaplasma is used for the detection of Anaplasma antibodies in canine serum, plasma and anticoagulated whole blood.

Details of the study

The Anaplasma antibody test strips were tested in the validation study 2017. A total of 260 dog sera were evaluated with the Anaplasma antibody test. As comparison, the SNAP4Dx was used as a reference test. A. platys infects canine platelets and is frequently seen as a coinfection with Ehrlichia canis.

Dogs coinfectd with E. canis and A. platys were found to have more severe anemia and thrombocytopenia than dogs with either single infection. Anaplasmosis is considered a zoonotic pathogen. This means it has the potential to infect humans.

However, direct transmission from animals to people, or animal to animal is highly unlikely and has not been documented.

TEST	Abaxis POS	Abaxis NEG
trūRapid Anaplasma POS	73	1
trūRapid Anaplasma NEG	2	184
Sensitivity	97.33%	
Specificity	99.46%	

Please contact your local business partner for the total validation: antechdiagnostics.de/kontakt



trūRapid Ehrlichia



trūRapid Ehrlichia is a rapid test for detection of Ehrlichia canis, chaffeensis, and ewingii antibodies in canine serum, plasma, or anticoagulated whole blood.

Ehrlichiosis is the general name used to describe diseases caused by the bacteria Ehrlichia canis, chaffeensis, and ewingii and transmitted by ticks.

The infection leads to multisystemic disease in dogs characterized by acute disease with unspecific signs, coagulation disorders, and ophthalmological lesions. The subclinical disease is common with minimal clinical illness and thrombocytopenia.

Some patients develop chronic disease which often resembles a similar clinical disease to the acute phase. Antibodies against Ehrlichia canis start to develop within 6-28 days post-infection and should be interpreted together with the clinical picture. Detection of antibodies present is rapidly performed using the trūRapid Ehrlichia.

Diagnosis of canine ehrlichiosis in dogs is based on clinical signs, the area the dog lives, hematology, cytology, serology and isolation.

Test for dogs
 Whole Blood Serum Plasma
 Ab
 Ehrlichiosis
 10 minutes test time
 storage temperature + 15 °C + 30 °C

Test performance

INFECTIOUS AGENT (annual screening recommended)	Sensitivity	Specificity	Reference	When to test
Ehrlichia	98,1%	99.6 %	commercial rapid test	1-3 weeks after exposure

*IDEXX

Test identity card

Name: trūRapid Ehrlichia
Sample Type: Whole Blood/Serum/Plasma
Shelf Life: 18 Months
Test Time: 10 Minutes
Species: Dog
Storage: Room Temperature

VALIDATION

Abstract: Diagnosis of Ehrlichiosis disease in dogs

Diagnosis of E.canis, E. chaffeensis and E. ewingii infection in animals is based on the detection of E.canis, E. chaffeensis and E. ewingii specific antibodies in serum, plasma and anticoagulated whole blood in the trūRapid Ehrlichia.

Details of the study

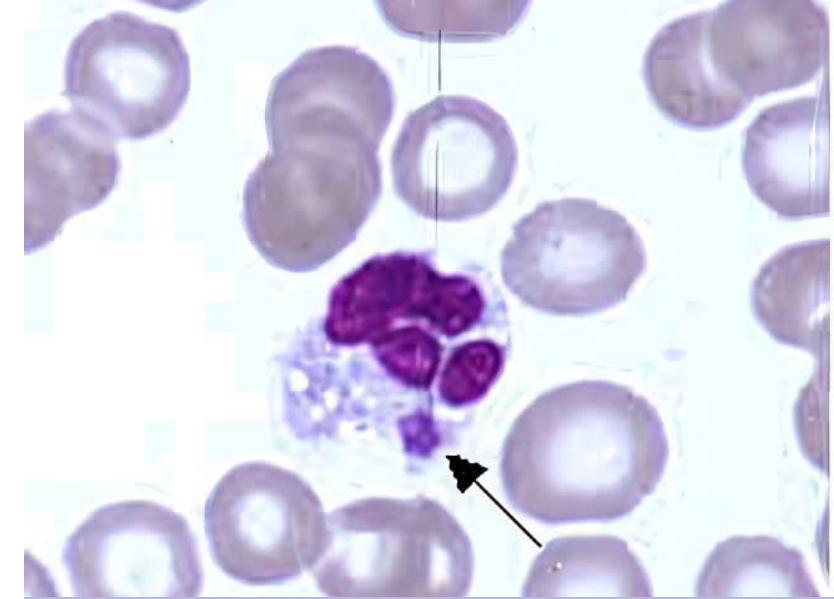
The truRapid Ehrlichia was tested in the validation study 2018. The total of 288 dogs were evaluated with the truRapid Ehrlichia. As comparison, the VetScan Canine Ehrlichia antibody test kit was used as a reference test.

The main host of Ehrlichia canis is the dog and the vector is the tick Rhipicephalus sanguineus. Ehrlichia canis, or a closely related species, has been described in cats but the clinical relevance is unclear.

Concurrent vector borne infections are common in the same dog, also because some species are transmitted in the same arthropod vector. Ehrlichia canis is not considered a zoonotic agent.

TEST	Abaxis POS	Abaxis NEG
trūRapid Ehrlichia POS	52	1
trūRapid Ehrlichia NEG	1	234
Sensitivity	98.1%	
Specificity	99.6%	

Please contact your local business partner for the total validation: antechdiagnostics.de/kontakt



trūRapid Heartworm (Dirofilaria)



trūRapid Heartworm Dirofilaria is a rapid test for detection of **Dirofilaria immitis antigen** in canine serum, plasma, or anticoagulated whole blood. 6–7 month after infection, adult female worms become apparent and can specifically be detected using trūRapid Dirofilaria.

Mild cases may be asymptomatic but more severely affected patients can show different stages of respiratory and cardiovascular diseases. The parasite is endemic in many tropical and subtropical regions. Therefore regular prophylactic treatment is needed for the dogs as well as checks for infectious status using trūRapid Dirofilaria.

The parasite commonly resides in the pulmonary arterial system as well as the heart and a major effect on animal health is manifestation of damage to the lung vessels and tissue. The clinical picture of the disease varies in affected dogs.

-  Test for dogs
-  Whole Blood Serum Plasma
-  Ag
-  Dirofilariasis
-  10 minutes test time
-  storage temperature + 15 °C + 30 °C

Test performance

INFECTIOUS AGENT (annual screening recommended)	Sensitivity	Specificity	Reference	When to test
Dirofilaria	98%	100 %	Necropsy and commercial rapid test	5–7 months after exposure

Test identity card

Name: trūRapid Heartworm Dirofilaria
Sample Type: Whole Blood/Serum/Plasma
Shelf Life: 12 Months
Test Time: 10 Minutes
Species: Dog
Storage: Room Temperature

VALIDATION

Abstract: Diagnosis of Heartworm disease in dogs

Diagnosis of Heartworm disease in dogs is based on clinical signs and the presence of heartworm antigen in blood. It is recommended an annual screening for all dogs over seven months of age. Additional testing is needed to confirm an active heartworm infection prior to the administration of any therapy. Confirmation is accomplished when another positive result is obtained utilizing a different type of antigen test, or the identification of circulating microfilariae.

Ultrasonography, radiography and echocardiography are also useful for confirming the diagnosis. In case of a negative rapid test result, the test has not detected heartworm antigen. A negative test also indicates that the animal is not infected or in an early-stage of infection (less than five to six months after infection prior to testing, during which the parasites have not matured into adult worms). In suspect cases, the test can be repeated in 5–6 months and additional diagnostic tests such as microfilaria testing, ultrasonography, echocardiography or radiography can be performed by the clinician.

Sensitivity and Specificity

The sensitivity and specificity of the test kit are based on the data generated during the USDA licensing process. A total of 350 serum samples were tested with trūRapid Heartworm (Dirofilaria) test. All positive samples were characterized by necropsy. The negative samples were characterized by DiroCHECK® Heartworm Antigen test. Sensitivity and specificity were determined using necropsy and DiroCHECK® Heartworm Antigen test results with a 2x2 analysis table, respectively (Table 1). All data is from naturally infected animals.

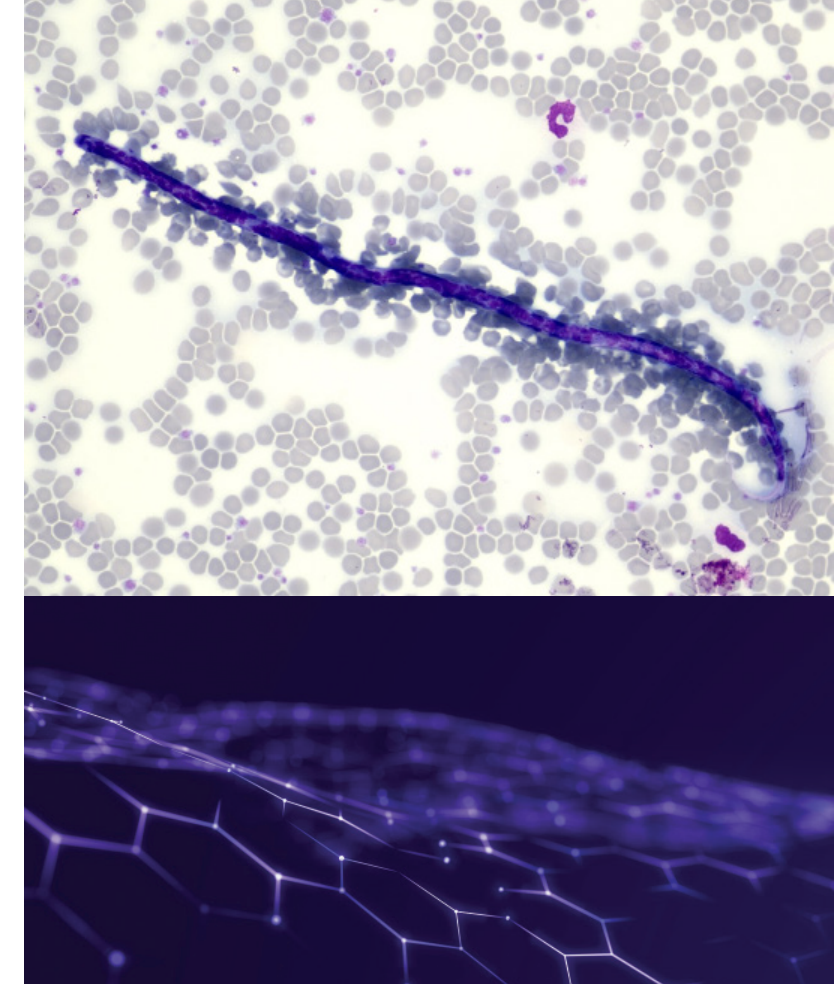


Table 1: 2x2 Sensitivity and Specificity of trūRapid Heartworm (Dirofilaria) test *. This study shows Heska trūRapid Heartworm (Dirofilaria) conveys excellent sensitivity and specificity (98%, 100%) for detection of Dirofilaria immitis antigen when compared to necropsy findings and a leading point-of-care heartworm ELISA antigen test. According to American Heartworm Society (AHS) guideline, if the test is positive, heartworm antigens are present. With the excellent sensitivity and specificity displayed in this validation study, Heska trūRapid Heartworm (Dirofilaria) provides reliability in screening and diagnosing heartworm infection and disease.

TEST	Necropsy POS	DiroCHECK NEG
trūRapid Heartworm (Dirofilaria) POS	147	0
trūRapid Heartworm (Dirofilaria) NEG	3	200
Sensitivity	98%	
Specificity	100%	

Please contact your local business partner for the total validation: antechdiagnostics.de/kontakt

trūRapid Leishmania



trūRapid Leishmania is a rapid test for detection of **Leishmania infantum antibody** in canine serum, plasma or anticoagulated whole blood. Leishmaniosis is a zoonosis that spreads across the tropics, subtropics, southern Europe as well as the Mediterranean and is transmitted by female sandflies (Phlebotomidae).

Leishmaniosis has even a noteworthy meaning in far northern areas as a travel or an imported disease. Due to an incubation period ranging from months to years dogs of all ages can be infected.

The disease can proceed symptomatically, subclinically, or latently; clinical symptoms are (ordered by decreasing frequency) lymphadenopathy, skin reactions, cachexia, hyperthermia, conjunctivitis, splenomegaly and abnormal claws.

Renal failure may develop in later stages of the disease and often leads to complications. As eradication of parasites is not possible, early detection of disease and lifelong treatment of the patient is required.

-  Test for dogs
-  Whole Blood
Serum
Plasma
-  Ab
-  Leishmaniasis
-  10 minutes test time
-  storage temperature
+ 15 °C
+ 30 °C

Test performance

INFECTIOUS AGENT (annual screening recommended)	Sensitivity	Specificity	Reference	When to test
Leishmania	100%	98,46%	IFA	2-3 months after exposure

Test identity card

Name: trūRapid Leishmania
Sample Type: Whole Blood/Serum/Plasma
Shelf Life: 18 Months
Test Time: 10 Minutes
Species: Dog
Storage: Room Temperature

VALIDATION

Abstract: Diagnosis of Leishmaniasis disease in dogs

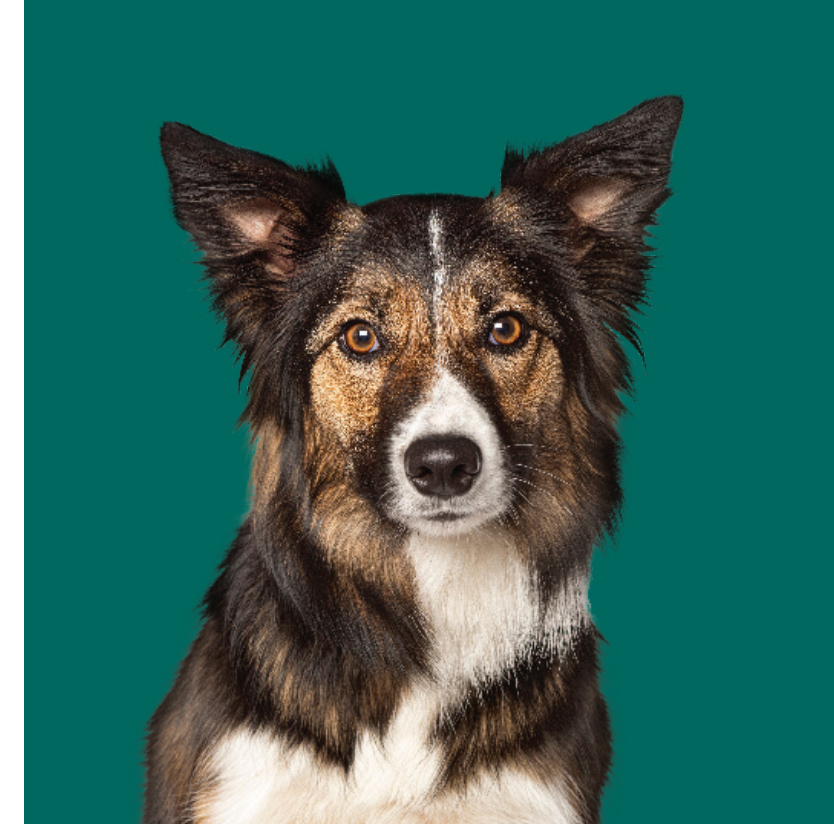
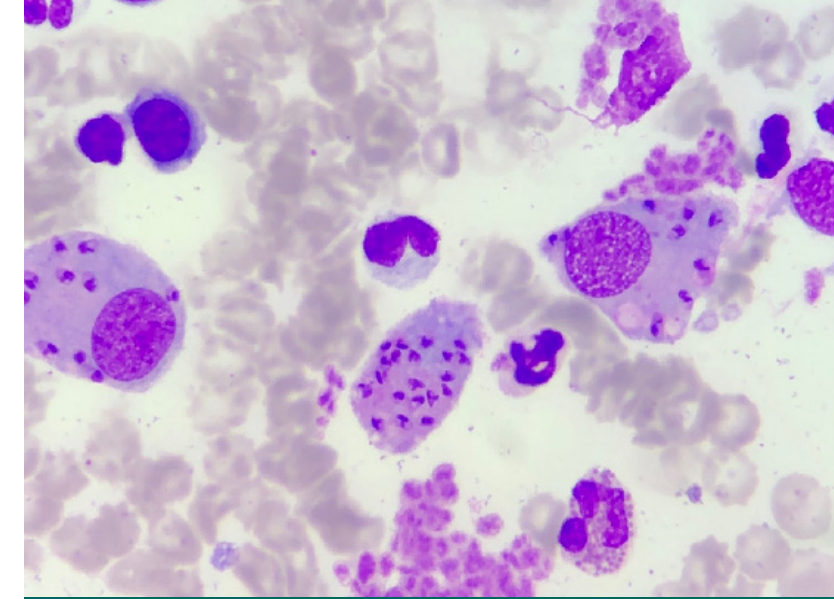
Dogs are the main reservoir of *L. infantum* but cats and other wild carnivores can also be hosts. Many other mammalian species can become infected including humans. Human cutaneous and visceral leishmaniasis is an important vectorborne zoonotic disease in southern Europe.

Clinical cases of human leishmaniosis are mainly reported in children and immunocompromised patients. Diagnosis of Leishmania infection in animals is based on the detection of Leishmania-specific antibody in serum, plasma and anticoagulated whole blood in the trūRapid Leishmania.

Details of the study

The Leishmania antibody test strips were tested in the validation study 2022. A total of 195 dog sera were evaluated with the Leishmania antibody test.

As comparison, URANO® Quattro test and IFA test were used as reference tests for sensitivity and specificity, respectively. CBC, biochemical profile and urinalysis including a urine protein/creatinine ratio should always be performed.



TEST	Urano POS	IFA NEG
trūRapid Leishmania POS	65	2
trūRapid Leishmania NEG	0	128
Sensitivity	100%	
Specificity	98.46%	

Please contact your local business partner for the total validation: antechdiagnostics.de/kontakt

trūRapid FIV/FeLV



The trūRapid FIV/FeLV is a rapid test for detection of **FIV antibody and FeLV antigen** in serum, plasma, or anticoagulated whole blood.

Retroviruses are an important infectious agent in cats worldwide. The FeLV disease manifests primarily through profound anemia, malignancies, and immunosuppression.

Cats infected with FeLV have varying levels of antigen against protein P27 in their blood which makes serological testing for antigen an excellent diagnostic tool.

Infection with the Feline Immunodeficiency Virus (FIV) leads to disruption of the animal's immune status and makes it prone to co-infections with other diseases (i.e. FeLV). Lymphadenomegaly, stomatitis, conjunctivitis, as well as diseases of the upper respiratory tract, can occur.

An FIV-infected cat may not show any symptoms for years, but the cats infected FIV produce high levels of antibodies throughout their lifetimes making it advantageous to diagnose the disease with serological testing.

- Test for cats
- Whole Blood Serum Plasma
- Ab Ag
- Feline Immunodeficiency Feline Leukemia
- 10 minutes test time
- storage temperature + 15 °C + 30 °C

Test performance

INFECTIOUS AGENT (annual screening recommended)	Sensitivity	Specificity	Reference	When to test
FIV	99%	98,50%	IFA	minimum of 60 days after exposure
FeLV	99%	100%	commercial rapid test	minimum of 28 days after exposure

*IDEXX

Test identity card

Name: trūRapid FIV/FeLV
Sample Type: Whole Blood/Serum/Plasma
Shelf Life: 12 Months
Test Time: 10 Minutes
Species: Cat
Storage: Room Temperature

VALIDATION

Abstract: Diagnosis of FIV and FeLV

The prevalence rates for FeLV infection in United states is 2.3%. The rates of FeLV infection has decreased significantly since the development of an effective vaccine and accurate testing procedures.

Some cats infected with FeLV can completely clear the infection (abortive infections) or partial clear the infection (regressive infections), which is more common in older cats. However, some cats especially for kittens and younger cats, become persistently viremic (progressive infection); they will shed the virus and be infected for the remainder of their life and develop FeLV associated disease.

The national incidence of diagnosed FIV infection in the United States is 4.56%. For cats that are already sick or at risk of infection, the prevalence rate can be as high as 15%. Since FIV is transmitted primarily through cat bites, aggressive cats are at a higher risk of becoming infected. Indoor cats that live alone see little risk of becoming infected. Outdoor cats that engage in fights often are at a much higher risk. Rarely, the infection can be transmitted from a mother cat to her kittens.

The trūRapid FIV test kit detects antibodies against the FIV glycoprotein gp40 and provides rapid on-site results intended for use in diagnostics.

Please contact your local business partner for the total validation: antechdiagnostics.de/kontakt



Table 1: 2x2 Sensitivity and Specificity compared with Commercial ELISA test*

TEST	Commercial ELISA Test Pos	Commercial ELISA Test Neg
trūRapid FeLV POS	99	0
trūRapid FeLV NEG	1	135
Sensitivity	99.0%	
Specificity	100%	

* USDA Licensing Sensitivity and Specificity Report Based on the analysis, the sensitivity of the trūRapid FeLV test kit is 99.0% and the specificity is 100%

Table 2: 2x2 Sensitivity and Specificity based on Naturally Infected Animals*

TEST	IFA Pos	IFA Neg
trūRapid FIV POS	204	4
trūRapid FIV NEG	2	268
Sensitivity	99.0%	
Specificity	98.5%	

* USDA Licensing Sensitivity and Specificity Report Based on the analysis, the sensitivity of the trūRapid FIV test kit is 99% and the specificity is 98.5%

trūRapid Giardia



The trūRapid Giardia is a rapid test for detection of **Giardia duodenalis** (also known as *G. intestinalis* or *G. lamblia*) **antigen** in canine and feline feces. Giardia duodenalis is a global, widespread, zoonotic protozoan parasite that forms trophozoites in the intestine where they can lead to enterocyte apoptosis and diarrhea.

Trophozoites and infectious cysts are intermittently shed with the feces. Clinically, Giardia infection can lead to acute or chronic diarrhea in dogs and cats, which may be self-limiting.

Asymptomatic cases occur frequently as well as periodic-intermittent diseases. The latter one is attributed to the persistence of cysts for a month in the environment as they are very resistant.

The parasite can be transmitted by ingesting these cysts from contaminated ground, food, or drinking water; these facts favor reinfection of patients, which is especially in households with multiple animals problematic.

VALIDATION

Abstract: Diagnosis of Giardiasis disease in dogs

The prevalence rates for Giardia infection in United states vary from 5% to 15% in healthy or symptomatic dogs or cats, which depends on the population studied, the area surveyed, and diagnostics method used.

Symptoms and Risk

The Giardiasis clinical symptoms in dogs and cats range from asymptomatic to slight abdominal discomfort to severe gastrointestinal disease. Diarrhea is the most common clinical sign; is usually self-limiting in immunocompetent animals. Severe diarrhea may cause dehydration, lethargy, and anorexia. However, most infected dogs and cats do not develop fever, and they remain alert and maintain a normal appetite.

The Companion Animal Parasite Council recommends the testing of dogs and cats with intermittent or consistent diarrhea with the combination of direct smear, fecal flotation with centrifugation, and Giardia antigen ELISA tests.

In addition, due to intermittent shedding of Giardia cysts, repeat testing performed over several days is also recommended to help identify the infection.

Diagnosis of Giardia infections by fecal flotation or fecal smear could be difficult, since the cysts are small and similar as other microorganism such as yeast. The Direct Immunofluorescence Assay (DFA) has been shown to be more sensitive and specific than the conventional flotation method, therefore DFA has widely served as the gold standard method. Total of 292 fecal samples collected from pet store, shelter or clinics in New York city and Baltimore area were tested with trūRapid Giardia test kit.

The results were compared with the DFA, the gold standard method. The Merifluor® Cryptosporidium /Giardia DFA kit was purchased from Meridian Biosciences, Cincinnati, USA. The estimated sensitivity of the DFA kit is 100% and the estimated specificity is 100%.

Please contact your local business partner for the total validation: [antechdiagnostics.de/kontakt](https://www.antechdiagnostics.de/kontakt)

-  Test for dogs & cats
-  Feces
-  Ag
-  Giardiasis
-  10 minutes test time
-  storage temperature + 15 °C + 30 °C

Test performance

INFECTIOUS AGENT (annual screening recommended)	Sensitivity	Specificity	Reference	When to test
Giardia	94,9%	97,8%	DFA	5-8 days after exposure

*IDEXX

Test identity card

Name: trūRapid Giardia
Sample Type: Feces
Shelf Life: 18 Months

Test Time: 10 Minutes
Species: Dog & Cat
Storage: Room Temperature



Table 1:
2x2 Sensitivity and Specificity compared with DFA*

TEST	DFA POS	DFA NEG
trūRapid Giardia POS	150	3
trūRapid Giardia NEG	8	131
Sensitivity	94.9%	
Specificity	97.8%	

* Internal study no 8734004

trūRapid Parvovirus



The trūRapid Parvovirus is a rapid test for the detection of **Parvovirus (CPV, FPV) antigens in dogs' and cats' feces**. The Parvo is a highly contagious and relatively common cause of acute gastroenteritis in young animals. Initial clinical signs may be nonspecific with progression to vomiting and hemorrhagic small bowel diarrhea.

All animals with relevant clinical signs should be immediately tested, so appropriate isolation procedures can be initiated.

A negative result with the trūRapid Parvovirus antigen test does not completely rule out a parvovirus infection: fecal shedding of parvovirus antigen at detectable levels typically occurs between 3–12 days post-exposure and usually correlates with the onset of clinical signs.

In puppies with moderate maternal antibody levels, viral shedding may be delayed by 1-2 days relative to the onset of clinical signs. Virus shedding begins to reduce by day 8-10 (post-infection).

 Test for dogs & cats
  Feces
  Ag
  Parvovirus
  10 minutes test time
  storage temperature + 15 °C + 30 °C

Test performance

INFECTIOUS AGENT (annual screening recommended)	Sensitivity	Specificity	Reference	When to test
Parvovirus	100%	100%	commercial rapid test	4-8 days after exposure

*Abaxis

Test identity card

Name: trūRapid Parvovirus
Sample Type: Feces
Shelf Life: 18 Months

Test Time: 10 Minutes
Species: Dog & Cat
Storage: Room Temperature

trūRapid Parvovirus Giardia



The trūRapid Parvovirus Giardia is a rapid test for the detection of **Parvovirus (CPV and FPV) and Giardia duodenalis antigens** in fecal samples of dogs and cats.

The Parvo is a highly contagious and relatively common cause of acute gastroenteritis in young animals. Initial clinical signs may be nonspecific with progression to vomiting and hemorrhagic small-bowel diarrhea.

Giardiasis is an intestinal infection in humans and animals, caused by a microscopic protozoan parasite Giardia spp..

Giardia infection can be acute or chronic. Intermittent shedding of causative agents should be considered. Parallel screening of the two diseases is useful to differentiate them as the clinical symptoms are similar and facilitates the rapid workflow in the clinic.

 Test for dogs & cats
  Feces
  Ag Ag
  Parvovirus Giardiasis
  10 minutes test time
  storage temperature + 15 °C + 30 °C

Test performance

INFECTIOUS AGENT (annual screening recommended)	Sensitivity	Specificity	Reference	When to test
Parvovirus	100%	100%	commercial rapid test	4-8 days after exposure
Giardia	94,9%	97,8%	DFA	5-8 days after exposure

*Abaxis

Test identity card

Name: trūRapid Parvovirus Giardia
Sample Type: Feces
Shelf Life: 18 Months

Test Time: 10 Minutes
Species: Dog & Cat
Storage: Room Temperature

trūRapid Parvovirus Giardia Coronavirus



The trūRapid Parvovirus Giardia Coronavirus is a rapid test for the detection of **Parvovirus (CPV)**, **Coronavirus (CCV)** and **Giardia duodenalis (GIA)** antigens in fecal samples of dogs and cats.

The Parvo is a highly contagious and relatively common cause of acute gastroenteritis in young animals. Initial clinical signs may be nonspecific with progression to vomiting and hemorrhagic small-bowel diarrhea.

The Coronavirus infection is an important cause of gastroenteritis in dogs of any age. Giardiasis is an intestinal infection in humans and animals, caused by a microscopic protozoan parasite Giardia spp..

Giardia infection can be acute or chronic. Intermittent shedding of causative agents should be considered. Parallel screening of the three diseases is useful to differentiate them as the clinical symptoms are similar and facilitates the rapid workflow in the clinic.

-  Test for dogs & cats
-  Feces
-  Ag
Ag
Ag
-  Parvovirus
Giardiasis
Coronavirosis
-  10 minutes test time
-  storage temperature
+ 15 °C
+ 30 °C

Test performance







INFECTIOUS AGENT <small>(annual screening recommended)</small>	Sensitivity	Specificity	Reference	When to test
Parvovirus	100%	100%	commercial rapid test	4-8 days after exposure
Giardia	94,9%	97,8%	DFA	5-8 days after exposure

*Abaxis **Coronavirus test is available only for dogs

Test identity card

Name: trūRapid Parvovirus Giardia Coronavirus
Sample Type: Feces
Shelf Life: 18 Months
Test Time: 10 Minutes
Species: Dog & Cat
Storage: Room Temperature

trūRapid Tests Overview

SPECIES	SAMPLE	TEST	ANTIGENS/ ANTIBODIES		DISEASES	SCIL CODE	TEST/ BOX
		trūRapid FOUR	Ag Ab Ab Ab	- IgG IgG IgG	Dirofilariasis Lyme borreliosis Ehrlichiosis Anaplasmosis	109442	10
		trūRapid Ehrlichia	Ab	IgG	Ehrlichiosis	109448	10
		trūRapid Heartworm Dirofilaria	Ag	-	Dirofilariasis	109447	10
		trūRapid Leishmania	Ab	IgG	Leishmaniasis	109444	10
		trūRapid FIV/FelV	Ab Ag	IgG -	FIV FelV	109454	10
		trūRapid Parvovirus Giardia Coronavirus*	Ag Ag Ag	-	Parvovirois Giardiasis Coronavirosis	109460	5
		trūRapid Parvovirus Giardia	Ag Ag	-	Parvovirois Giardiasis	109463	5
		trūRapid Parvovirus	Ag	-	Parvovirois	109461	5
		trūRapid Giardia	Ag	-	Giardiasis	109462	5

* Coronavirus test is only available for dogs

Antech
Smarter Diagnostics. Better Care.™

Antech Diagnostics Germany GmbH
Dina-Weissmann-Allee 6
68519 Viernheim
Deutschland

Tel: +49 (0) 6204 7890 0
Fax: +49 (0) 6204 7890 200
E-Mail: info.de@antechdx.com
Web: antechdiagnostics.de